

SUMMARY OF DEVELOPMENT APPLICATIONS CIRCULATED*



Circulated from September 1 — September 14



3 Development Applications



1,700 Total Residential Units



N/A Total Gross Floor Area Industrial, Commercial or Institutional

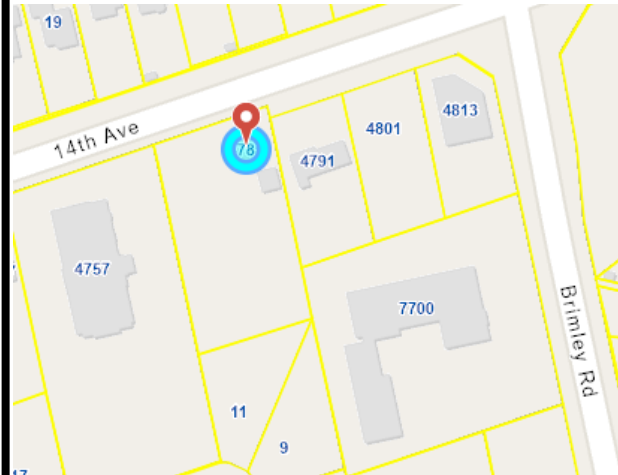
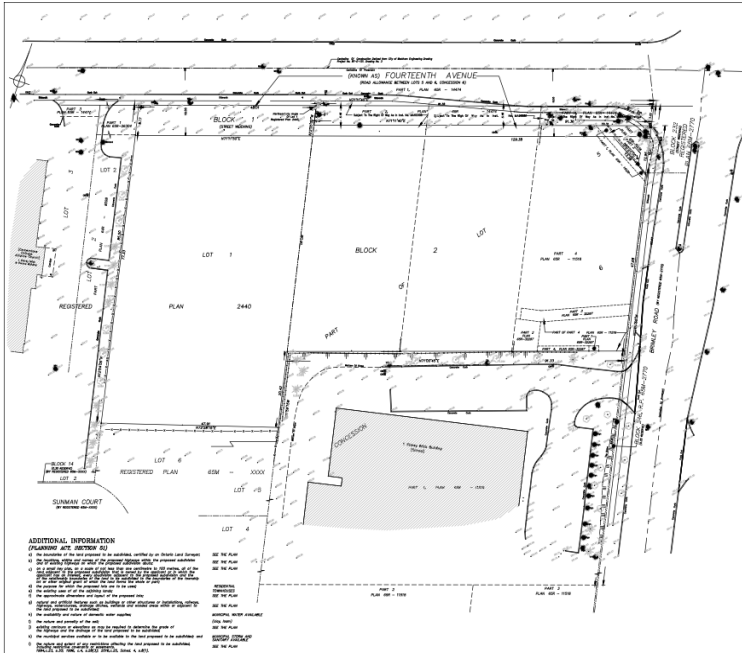
Table of Contents

Summary of Development Applications Circulated from Sep 1—Sep 14

| La Dolce Villa Limited Partner | 22-266094 PLAN | 8-Sep-25 | 6-Jan-26 | 4781 14th Avenue | 8 | Residential | N/A | NA |
|--------------------------------|-------------------|----------|-----------|--------------------|---|-------------|-----|-----|
| Lindwide (Frank Palombi) | 25-132969 PLAN | 3-Sep-25 | n/a | 7 Highway E | 5 | Extension | 960 | N/A |
| Treasure Hill (Elgin Mills) | 25-133512 PLAN | 3-Sep-25 | 25-Dec-25 | Elgin Mills Road E | 6 | Residential | 740 | N/A |

**official plan amendment, zoning by-law amendment, plan of subdivision, site plan control, condo – defined on final page*

La Dolce Villa Limited Partner PLAN



STATISTICS SUMMARY



La Dolce Villa Limited Partner



22-266094 PLAN



8-Sep-25



4781 14th Avenue



[Ward 8](#)



Residential



N/A



N/A



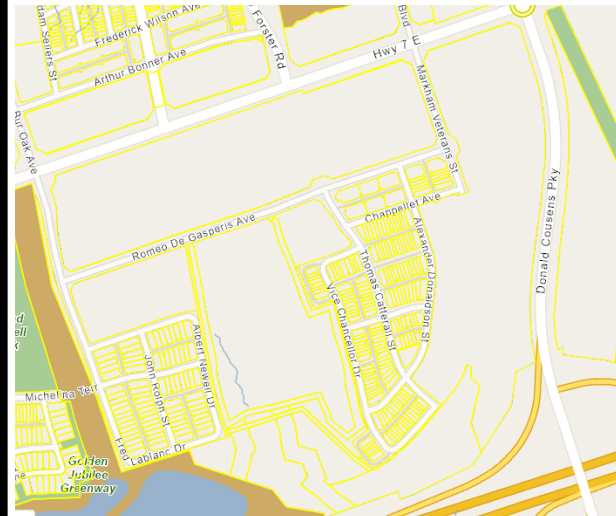
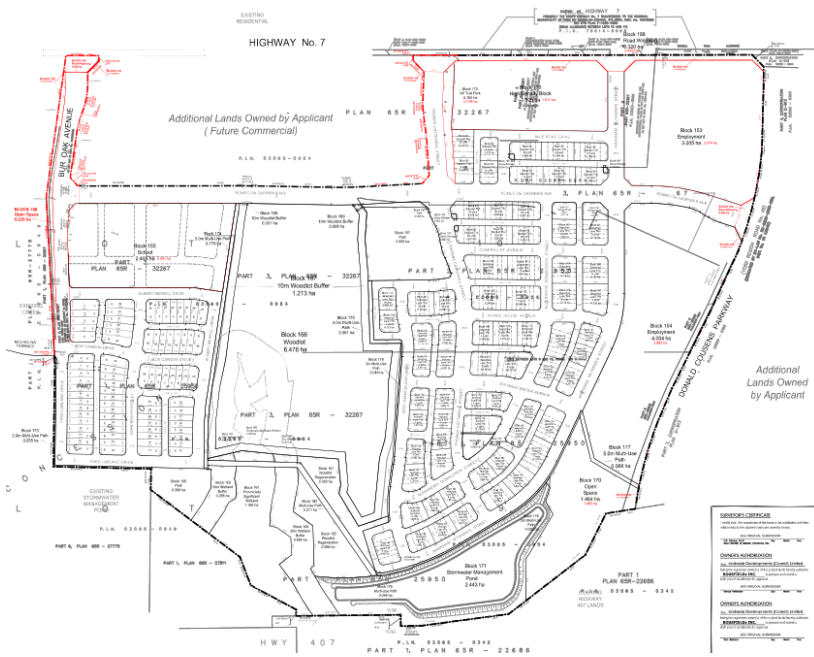
Stephen Corr
ext. 2532



Council Committee to Approve

An ePLAN Application for a Draft Plan of Subdivision has been received from La Dolce Villa Limited Partner (Victor Huang) c/o JKO Planning Services Inc. (Jim Kotsopoulos) for 4781 14th Avenue. The applicant is proposing to develop a 39 unit townhouse development. This application is to facilitate the legal description of the subject lands as necessary. Council has previously approved a site specific Zoning By-law for the subject lands (ZA 18 114381).

Lindwide (Frank Palombi) PLAN



STATISTICS SUMMARY



Lindwide
(Developments)
Cornell Limited



25-132969 PLAN



3-Sep-25



7 Highway E



[Ward 5](#)



Extension



960 (321 units already registered)



N/A



Stacia Muradali
ext: 2008



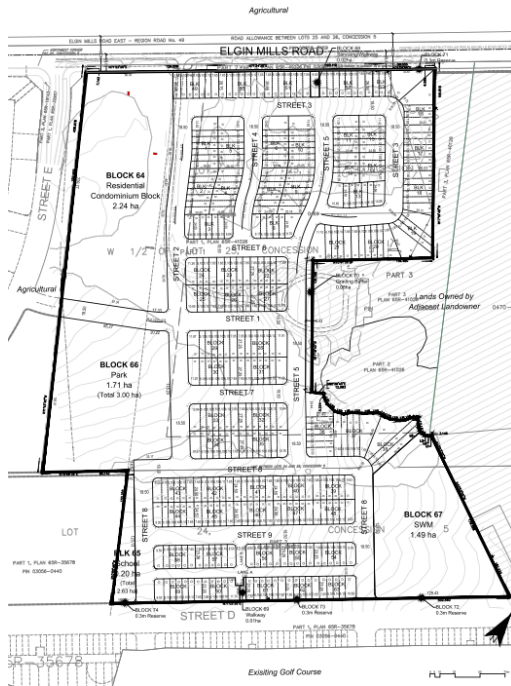
Council Committee to Approve

An application for an Extension of Draft Plan Approval has been received from Lindwide (Developments) Cornell Limited (Frank Palombi) for 19TM-18002 (Lands located at the South West corner of Donald Cousens Parkway and Highway #7). The applicant is requesting an additional extension. Portions of this draft plan of subdivision have been registered in two phases, as shown on the plans submitted in ePlan. The extension will apply to the remaining portions still to be registered.

This application is related to PLAN 22.154617 000 00.

Treasure Hill (Elgin Mills)

PLAN



STATISTICS SUMMARY



Treasure Hill (Suraj Verma) c/o Malone Given Parsons Ltd



25-133512 PLAN



3-Sep-25



Elgin Mills Road E



[Ward 6](#)



Residential



740



N/A



Stephen Corr
ext. 2532



Council Committee to Approve

An ePLAN Application for an Official Plan and Zoning By-law Amendment has been received from Treasure Hill (Suraj Verma) c/o Malone Given Parsons Ltd. (Emily Grant) for Elgin Mills Road. The applicant is proposing to develop 285 street townhouse units, 89 rear access townhouse units, and a condominium block containing 366 stacked back to back townhouses. The proposed development also includes a park, stormwater management block, school block, and a road network. This application is related to PLAN 25 133521.

DEFINITION OF APPLICATION TYPES



Official Plan Amendment

The process through which changes are made to the City's Official Plan. A document, containing policies which guide the future development of land in Markham. The Official Plan also includes a framework for establishing regulations and standards for land use and contains policies on how the City will manage growth.

Zoning By-Law Amendment

The process through which the City guides and approves changes to how lands are used for specific purposes. The process also addresses related development standards such as property setbacks, building height, and parking.

Plan of Subdivision

The process through which the City guides and approves the design and layout of building lots and roads (neighborhoods).

Site Plan Control

The process through which the City guides and approves the layout of building elevation, landscape and site circulation.

Condo

The process through which the City guides and approves the development of condominiums.