

SITE STATISTICS

MUNICIPAL ADDRESS	21 Ridgevale Dr Markham, ON L6B 1A8			
ZONING	RES-ENLR (RESIDENTIAL ESTABLISHED NEIGHBOURHOOD LOWRISE)			
LOT AREA	4248.22 m ²	45727.39 ft ²	ESTABLISHED GRADE:	159.31 158.96 159.14
ZONING INFORMATION	PERMITTED		PROPOSED	
	(metre)	(feet)	(metre)	(feet)
FRONTAGE (MIN.)	51.21	167.97	EXISTING TO REMAIN	
FRONT YARD SETBACK	7.50	91.74		
EXTERIOR SIDE YARD SETBACK	1.80	5.90		
INTERIOR SIDE YARD SETBACK	1.80	5.90		
REAR YARD SETBACK	7.50	24.60		
BUILDING HEIGHT	10.00	32.80		
LOT COVERAGE	PROPOSED			
	(m ²)	(ft ²)		
BASEMENT FLOOR	352.76	3797.07	EBL	26.52 29.42 27.97
BASEMENT WALK OUT	9.59	103.23		
FRONT PORCH	6.86	73.84		
FIRST FLOOR	329.90	3551.01		
SUNROOM	14.96	161.03		
GARAGE & STORAGE	85.42	919.45		
SECOND FLOOR	229.15	2466.55		
COVID REAR TERRACE	33.24	357.79		
OPEN TERRACE	23.94	257.69		
SIDE-REAR TERRACE -SECOND FLOOR	83.20	895.56		
TOTAL LOT COVERAGE	11.70%	497.05 5350.20		
MAX PERMITTED LOT COVERAGE	35.00%	1486.88 16004.59		



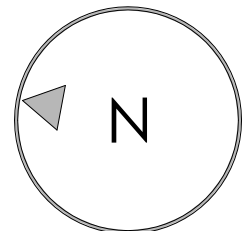
NO.	DESCRIPTION	DATE
1	ISSUED FOR SHOP DRAWINGS	07-10-2024
2	RE ISSUED FOR SHOP DRAWINGS	08-15-2024
3	RE ISSUED FOR SHOP DRAWINGS	08-28-2024
4	ISSUED FOR PERMIT	11-08-2024
5	RE ISSUED FOR PERMIT	04-05-2025
6	RE ISSUED FOR PERMIT	05-22-2025
7	RE ISSUED FOR PERMIT	06-06-2025
8	RE ISSUED FOR PERMIT	06-13-2025

NOTES:
 DRAWINGS MUST NOT BE SCALED
 DRAWINGS TO BE READ IN CONJUNCTION WITH THE GENERAL NOTES AND THE O.B.C.
 ALL DRAWINGS & INFORMATION SHOWN ON THESE DRAWINGS MUST BE CHECKED & VERIFIED ON SITE PRIOR TO CONSTRUCTION OR FABRICATION OF ITS COMPONENTS. UNLESS NOTED OTHERWISE, NO PROVISION HAS BEEN MADE IN THE DESIGN FOR CONDITIONS OCCURRING DURING CONSTRUCTION.
 IT SHALL BE THE RESPONSIBILITY OF THE CONTRACTOR TO PROVIDE ALL NECESSARY BRACING, SHORING, SHEET PILING, OR OTHER TEMPORARY SUPPORTS, TO SAFEGUARD ALL EXISTING OR ADJACENT STRUCTURES AFFECTED BY CONSTRUCTION. ALL DIMENSIONS ARE GIVEN IN IMPERIAL UNITS UNLESS OTHERWISE INDICATED.
 ALL DRAWINGS ARE THE PROPERTY OF THE ARCHITECT / DESIGNER & MUST BE RETURNED UPON REQUEST.

SENSUS
 DESIGN STUDIO
 DESIGN | INTERIORS | CONSTRUCTION

1315 LAWRENCE AVE EAST, TORONTO ON
 UNIT # 510
 PHONE: 416-919-1433
 EMAIL: jesse@sensusedesignbuild.ca
 www.sensusedesignbuild.ca

PROFESSIONAL STAMPS:



The undersigned has reviewed and takes responsibility for this design, and has the qualifications and meets the requirements setout in the Ontario Building Code to be a designer.

Qualification Information
 Required unless design is exempt under Div. C - 3.2.5 of the Building Code

JESSE SAHLANI 44549
 NAME B.C.I.N.
 SENSUS DESIGN & BUILD INC. 123494
 FIRM B.C.I.N.

PROPOSED
SINGLE FAMILY
DWELLING UNIT

21 Ridgevale Dr Markham, ON L6B 1A8

SHEET TITLE:

PROPOSED
SITE PLAN

DRAWN BY: SVP SHEET No.
 CHECKED BY: JS
 DATE: 06-06-2025
 SCALE: AS SHOWN **.SP1.**

PROPOSED SITEPLAN
 1/16" = 1'-0"

DOOR SCHEDULE				
DOOR TAG	WIDTH	HEIGHT	DESCRIPTION	Count
D1	3'-3"	8'-0"	SINGLE WOOD DOOR W/ WEATHER TIGHT SEAL	1
D2	6'-0"	9'-0"	2 PANEL SLIDING EXTERIOR DOOR W/ WEATHER TIGHT SEAL	1
D3	8'-4"	9'-0"	2 PANEL SLIDING EXTERIOR DOOR W/ WEATHER TIGHT SEAL	1
D4	10'-0"	9'-0"	3 PANEL SLIDING EXTERIOR DOOR W/ WEATHER TIGHT SEAL	1
D5	8'-0"	9'-0"	3 PANEL SLIDING EXTERIOR DOOR W/ WEATHER TIGHT SEAL	1
D6	3'-0"	8'-8"	SINGLE GLASS DOOR W/ WEATHER TIGHT SEAL	1
D7	3'-0"	8'-0"	SINGLE WOOD DOOR C/W SELF CLOSING MECH.	2
D8	8'-0"	8'-0"	4 PANEL WOOD SLIDING DOOR	1
D9	3'-0"	8'-0"	INTERIOR WOOD DOOR	15
D10	3'-0"	8'-0"	INTERIOR POCKET DOOR	2
D11	2'-8"	7'-0"	INTERIOR WOOD DOOR	1
D12	3'-0"	8'-0"	INTERIOR WOOD DOOR - ELEVATOR	3
D13	2'-8"	8'-0"	INTERIOR POCKET DOOR	3
D14	1'-8"	8'-0"	INTERIOR POCKET DOOR	2
D15	3'-0"	9'-0"	INTERIOR FRENCH GLASS DOOR - (SEE I. D.)	1
D16	12'-8"	9'-0"	4 PANEL GLASS SLIDING DOOR - SUNROOM	1
D17	5'-0"	9'-0"	EXTERIOR DOUBLE WOOD DOOR W/ WEATHER TIGHT SEAL	1
D18	3'-0"	8'-0"	EXTERIOR WOOD DOOR c/w WEATHER TIGHT SEAL	2
D19	5'-0"	8'-0"	INTERIOR DOUBLE WOOD DOOR	2
D21	8'-0"	8'-0"	2 PANEL SLIDING EXTERIOR DOOR W/ WEATHER TIGHT SEAL	1
D22	3'-0"	8'-0"	INTERIOR WOOD DOOR	1
D23	3'-0"	8'-0"	INTERIOR POCKET DOOR	2
D29	5'-0"	8'-0"	INTERIOR GLASS SLIDING DOOR IN GLASS SYSTEM	1
OH1	9'-0"	9'-0"	OVERHEAD GARAGE DOOR c/w WEATHER TIGHT SEAL & POWER DOOR OPENER	1
OH2	16'-0"	9'-0"	OVERHEAD GARAGE DOOR c/w WEATHER TIGHT SEAL & POWER DOOR OPENER	1

NOTE:
 1. ALL DOOR ARE PLACED MIN 6" FROM ADJACENT WALL OR CENTER OF THE WALL OR AS NOTED IN FLOOR PLAN (TYP.)
 2. ALL FLOOR TO CEILING DOOR OPENING TO BE SITE VERIFY BEFORE PRODUCTION.
 3. ANY MAJOR DISCREPANCIES SHOULD BE REPORTED TO SENSUS DESIGN STUDIO.
 4. USE DOOR AND WINDOW SCHEDULES IN REFERENCE TO FLOOR PLANS & ELEVATIONS.

WINDOW SCHEDULE						
WINDOW TAG	WINDOW SPEC		COMMENTS	SILL HEIGHT	HEAD HEIGHT	COUNT
	WIDTH	HEIGHT				
S1	4'-0"	4'-0"	SKYLIGHT WINDOW			3
W1	5'-0"	4'-0"	CAST IN PLACE SLIDING WINDOW	5'-0"	9'-0"	3
W2	3'-8"	4'-0"	CAST IN PLACE SLIDING WINDOW	5'-0"	9'-0"	3
W3	7'-0"	4'-0"	CAST IN PLACE SLIDING WINDOW	5'-0"	9'-0"	2
W4	2'-0"	6'-0"	FIXED SIDELITE WINDOW- MAIN DOOR	2'-0"	8'-0"	2
W5	7'-9"	4'-0"	FIXED WINDOW	0'-0"	4'-0"	1
W6	3'-6"	7'-0"	OPERABLE WINDOW	3'-0"	10'-0"	2
W7	5'-0"	7'-0"	OPERABLE WINDOW	0'-6"	7'-6"	1
W8	2'-6"	6'-0"	OPERABLE WINDOW	1'-0"	7'-0"	2
W9	5'-0"	5'-0"	FIXED TRANSOM WINDOW	8'-0"	13'-0"	2
W10	1'-8"	6'-0"	OPERABLE WINDOW	1'-0"	7'-0"	2
W11	2'-0"	2'-0"	FIXED TRANSOM WINDOW	7'-0"	9'-0"	2
W12	3'-4"	6'-0"	OPERABLE WINDOW	1'-0"	7'-0"	3
W13	2'-0"	6'-0"	FIXED TRANSOM WINDOW	7'-0"	9'-0"	3
W14	3'-6"	8'-0"	OPERABLE WINDOW	2'-0"	10'-0"	2
W15	3'-6"	6'-0"	OPERABLE WINDOW	0'-0"	6'-0"	2
W16	2'-6"	6'-0"	OPERABLE WINDOW	2'-0"	8'-0"	1
W17	3'-0"	5'-6"	OPERABLE WINDOW	1'-0"	6'-6"	2
W18	3'-0"	2'-6"	FIXED TRANSOM WINDOW	7'-0"	9'-6"	2
W19	3'-6"	4'-6"	OPERABLE WINDOW	2'-0"	6'-6"	2
W20	3'-0"	6'-0"	OPERABLE WINDOW	0'-0"	6'-0"	2
W21	3'-6"	5'-6"	OPERABLE WINDOW	3'-6"	9'-0"	3
W22	3'-6"	5'-0"	OPERABLE WINDOW	2'-6"	7'-6"	3
W23	3'-0"	3'-3"	FIXED WINDOW	3'-0"	6'-3"	2
W24	3'-0"	9'-0"	PARTIAL OPERABLE WINDOW	0'-0"	9'-0"	3
W25	4'-0"	9'-0"	FIXED WINDOW	0'-0"	9'-0"	4
W26	3'-4"	4'-6"	FIXED WINDOW	10'-0"	14'-6"	3
W27	3'-8"	10'-0"	FIXED WINDOW	0'-0"	10'-0"	3
W28	3'-8"	7'-0"	OPERABLE WINDOW	0'-0"	7'-0"	3
W29	2'-0"	8'-0"	FIXED SIDELITE WINDOW- WALKOUT DOOR	0'-0"	8'-0"	1
W30	2'-0"	5'-10"	OPERABLE WINDOW- INTERIOR KITCHEN	3'-2"	9'-0"	1

NO.	DESCRIPTION	DATE
1	ISSUED FOR SHOP DRAWINGS	07-10-2024
2	RE ISSUED FOR SHOP DRAWINGS	08-15-2024
3	RE ISSUED FOR SHOP DRAWINGS	08-28-2024
4	ISSUED FOR PERMIT	11-08-2024
5	RE ISSUED FOR PERMIT	04-05-2025
6	RE ISSUED FOR PERMIT	05-22-2025
7	RE ISSUED FOR PERMIT	06-06-2025
8	RE ISSUED FOR PERMIT	06-13-2025

NOTES:
 DRAWINGS MUST NOT BE SCALED
 DRAWINGS TO BE READ IN CONJUNCTION WITH THE GENERAL NOTES AND THE O.B.C.
 ALL DRAWINGS & INFORMATION SHOWN ON THESE DRAWINGS MUST BE CHECKED & VERIFIED ON SITE PRIOR TO CONSTRUCTION OR FABRICATION OF ITS COMPONENTS. UNLESS NOTED OTHERWISE, NO PROVISION HAS BEEN MADE IN THE DESIGN FOR CONDITIONS OCCURRING DURING CONSTRUCTION.
 IT SHALL BE THE RESPONSIBILITY OF THE CONTRACTOR TO PROVIDE ALL NECESSARY BRACING, SHORING, SHEET PILING, OR OTHER TEMPORARY SUPPORTS, TO SAFEGUARD ALL EXISTING OR ADJACENT STRUCTURES AFFECTED BY CONSTRUCTION. ALL DIMENSIONS ARE GIVEN IN IMPERIAL UNITS UNLESS OTHERWISE INDICATED.
 ALL DRAWINGS ARE THE PROPERTY OF THE ARCHITECT / DESIGNER & MUST BE RETURNED UPON REQUEST.

SENSUS
 DESIGN STUDIO
 DESIGN | INTERIORS | CONSTRUCTION
 1315 LAWRENCE AVE EAST, TORONTO ON
 UNIT # S10
 PHONE: 416-919-1433
 EMAIL: jesse@sensusedesignbuild.ca
 www.sensusedesignbuild.ca



PROFESSIONAL STAMPS:
 The undersigned has reviewed and takes responsibility for this design, and has the qualifications and meets the requirements setout in the Ontario Building Code to be a designer.
 Qualification Information
 Required unless design is exempt under Div. C - 3.2.5 of the Building Code
 JESSE SAHLANI 44549
 NAME B.C.I.N.
 SENSUS DESIGN & BUILD INC. 123494
 FIRM B.C.I.N.

PROPOSED SINGLE FAMILY DWELLING UNIT

21 Ridgevale Dr, Markham, ON L6B 1A8

SHEET TITLE:
PROPOSED FRONT ELEVATION

DRAWN BY: SVP SHEET No.
 CHECKED BY: JS
 DATE: 06-06-2025
 SCALE: AS SHOWN **A6**

DOOR SCHEDULE				
DOOR TAG	WIDTH	HEIGHT	DESCRIPTION	Count
D1	3'-3"	8'-0"	SINGLE WOOD DOOR W/ WEATHER TIGHT SEAL	1
D2	6'-0"	9'-0"	2 PANEL SLIDING EXTERIOR DOOR W/ WEATHER TIGHT SEAL	1
D3	8'-4"	9'-0"	2 PANEL SLIDING EXTERIOR DOOR W/ WEATHER TIGHT SEAL	1
D4	10'-0"	9'-0"	3 PANEL SLIDING EXTERIOR DOOR W/ WEATHER TIGHT SEAL	1
D5	8'-0"	9'-0"	3 PANEL SLIDING EXTERIOR DOOR W/ WEATHER TIGHT SEAL	1
D6	3'-0"	8'-8"	SINGLE GLASS DOOR W/ WEATHER TIGHT SEAL	1
D7	3'-0"	8'-0"	SINGLE WOOD DOOR C/W SELF CLOSING MECH.	2
D8	8'-0"	8'-0"	4 PANEL WOOD SLIDING DOOR	1
D9	3'-0"	8'-0"	INTERIOR WOOD DOOR	15
D10	3'-0"	8'-0"	INTERIOR POCKET DOOR	2
D11	2'-8"	7'-0"	INTERIOR WOOD DOOR	1
D12	3'-0"	8'-0"	INTERIOR WOOD DOOR - ELEVATOR	3
D13	2'-8"	8'-0"	INTERIOR POCKET DOOR	3
D14	1'-8"	8'-0"	INTERIOR POCKET DOOR	2
D15	3'-0"	9'-0"	INTERIOR FRENCH GLASS DOOR - (SEE I. D.)	1
D16	12'-8"	9'-0"	4 PANEL GLASS SLIDING DOOR - SUNROOM	1
D17	5'-0"	9'-0"	EXTERIOR DOUBLE WOOD DOOR W/ WEATHER TIGHT SEAL	1
D18	3'-0"	8'-0"	EXTERIOR WOOD DOOR c/w WEATHER TIGHT SEAL	2
D19	5'-0"	8'-0"	INTERIOR DOUBLE WOOD DOOR	2
D21	8'-0"	8'-0"	2 PANEL SLIDING EXTERIOR DOOR W/ WEATHER TIGHT SEAL	1
D22	3'-0"	8'-0"	INTERIOR WOOD DOOR	1
D23	3'-0"	8'-0"	INTERIOR POCKET DOOR	2
D29	5'-0"	8'-0"	INTERIOR GLASS SLIDING DOOR IN GLASS SYSTEM	1
OH1	9'-0"	9'-0"	OVERHEAD GARAGE DOOR c/w WEATHER TIGHT SEAL & POWER DOOR OPENER	1
OH2	16'-0"	9'-0"	OVERHEAD GARAGE DOOR c/w WEATHER TIGHT SEAL & POWER DOOR OPENER	1

NOTE:
 1. ALL DOOR ARE PLACED MIN 6" FROM ADJACENT WALL OR CENTER OF THE WALL OR AS NOTED IN FLOOR PLAN (TYP.)
 2. ALL FLOOR TO CEILING DOOR OPENING TO BE SITE VERIFY BEFORE PRODUCTION.
 3. ANY MAJOR DISCREPANCIES SHOULD BE REPORTED TO SENSUS DESIGN STUDIO.
 4. USE DOOR AND WINDOW SCHEDULES IN REFERENCE TO FLOOR PLANS & ELEVATIONS.

WINDOW SCHEDULE						
WINDOW TAG	WINDOW SPEC		COMMENTS	SILL HEIGHT	HEAD HEIGHT	COUNT
	WIDTH	HEIGHT				
S1	4'-0"	4'-0"	SKYLIGHT WINDOW			3
W1	5'-0"	4'-0"	CAST IN PLACE SLIDING WINDOW	5'-0"	9'-0"	3
W2	3'-8"	4'-0"	CAST IN PLACE SLIDING WINDOW	5'-0"	9'-0"	3
W3	7'-0"	4'-0"	CAST IN PLACE SLIDING WINDOW	5'-0"	9'-0"	2
W4	2'-0"	6'-0"	FIXED SIDELITE WINDOW- MAIN DOOR	2'-0"	8'-0"	2
W5	7'-9"	4'-0"	FIXED WINDOW	0'-0"	4'-0"	1
W6	3'-6"	7'-0"	OPERABLE WINDOW	3'-0"	10'-0"	2
W7	5'-0"	7'-0"	OPERABLE WINDOW	0'-6"	7'-6"	1
W8	2'-6"	6'-0"	OPERABLE WINDOW	1'-0"	7'-0"	2
W9	2'-6"	5'-0"	FIXED TRANSOM WINDOW	8'-0"	13'-0"	2
W10	1'-8"	6'-0"	OPERABLE WINDOW	1'-0"	7'-0"	2
W11	1'-8"	2'-0"	FIXED TRANSOM WINDOW	7'-0"	9'-0"	2
W12	3'-4"	6'-0"	OPERABLE WINDOW	1'-0"	7'-0"	3
W13	3'-4"	2'-0"	FIXED TRANSOM WINDOW	7'-0"	9'-0"	3
W14	3'-6"	8'-0"	OPERABLE WINDOW	2'-0"	10'-0"	2
W15	3'-6"	6'-0"	OPERABLE WINDOW	0'-0"	6'-0"	2
W16	2'-6"	6'-0"	OPERABLE WINDOW	2'-0"	8'-0"	1
W17	3'-0"	5'-6"	OPERABLE WINDOW	1'-0"	6'-6"	2
W18	3'-0"	2'-6"	FIXED TRANSOM WINDOW	7'-0"	9'-6"	2
W19	3'-6"	4'-6"	OPERABLE WINDOW	2'-0"	6'-6"	2
W20	3'-0"	6'-0"	OPERABLE WINDOW	0'-0"	6'-0"	2
W21	3'-6"	5'-6"	OPERABLE WINDOW	3'-6"	9'-0"	3
W22	3'-6"	5'-0"	OPERABLE WINDOW	2'-6"	7'-6"	3
W23	3'-0"	3'-3"	FIXED WINDOW	3'-0"	6'-3"	2
W24	3'-0"	9'-0"	PARTIAL OPERABLE WINDOW	0'-0"	9'-0"	3
W25	4'-0"	9'-0"	FIXED WINDOW	0'-0"	9'-0"	4
W26	3'-4"	4'-6"	FIXED WINDOW	10'-0"	14'-6"	3
W27	3'-8"	10'-0"	FIXED WINDOW	0'-0"	10'-0"	3
W28	3'-8"	7'-0"	OPERABLE WINDOW	0'-0"	7'-0"	3
W29	2'-0"	8'-0"	FIXED SIDELITE WINDOW- WALKOUT DOOR	0'-0"	8'-0"	1
W30	2'-0"	5'-10"	OPERABLE WINDOW- INTERIOR KITCHEN	3'-2"	9'-0"	1

NO.	DESCRIPTION	DATE
1	ISSUED FOR SHOP DRAWINGS	07-10-2024
2	RE ISSUED FOR SHOP DRAWINGS	08-15-2024
3	RE ISSUED FOR SHOP DRAWINGS	08-28-2024
4	ISSUED FOR PERMIT	11-08-2024
5	RE ISSUED FOR PERMIT	04-05-2025
6	RE ISSUED FOR PERMIT	05-22-2025
7	RE ISSUED FOR PERMIT	06-06-2025
8	RE ISSUED FOR PERMIT	06-13-2025

NOTES:
 DRAWINGS MUST NOT BE SCALED
 DRAWINGS TO BE READ IN CONJUNCTION WITH THE GENERAL NOTES AND THE O.B.C.
 ALL DRAWINGS & INFORMATION SHOWN ON THESE DRAWINGS MUST BE CHECKED & VERIFIED ON SITE PRIOR TO CONSTRUCTION OR FABRICATION OF ITS COMPONENTS. UNLESS NOTED OTHERWISE, NO PROVISION HAS BEEN MADE IN THE DESIGN FOR CONDITIONS OCCURRING DURING CONSTRUCTION.
 IT SHALL BE THE RESPONSIBILITY OF THE CONTRACTOR TO PROVIDE ALL NECESSARY BRACING, SHORING, SHEET PILING, OR OTHER TEMPORARY SUPPORTS, TO SAFEGUARD ALL EXISTING OR ADJACENT STRUCTURES AFFECTED BY CONSTRUCTION. ALL DIMENSIONS ARE GIVEN IN IMPERIAL UNITS UNLESS OTHERWISE INDICATED.
 ALL DRAWINGS ARE THE PROPERTY OF THE ARCHITECT / DESIGNER & MUST BE RETURNED UPON REQUEST.

SENSUS
 DESIGN STUDIO
 DESIGN | INTERIORS | CONSTRUCTION
 1315 LAWRENCE AVE EAST, TORONTO ON
 UNIT # 510
 PHONE: 416-919-1433
 EMAIL: jesse@sensusdesignbuild.ca
 www.sensusdesignbuild.ca

PROFESSIONAL STAMPS:

The undersigned has reviewed and takes responsibility for this design, and has the qualifications and meets the requirements setout in the Ontario Building Code to be a designer.
 Qualification Information
 Required unless design is exempt under Div. C - 3.2.5 of the Building Code
 JESSE SAHLANI 44549
 NAME B.C.I.N.
 SENSUS DESIGN & BUILD INC. 123494
 FIRM B.C.I.N.

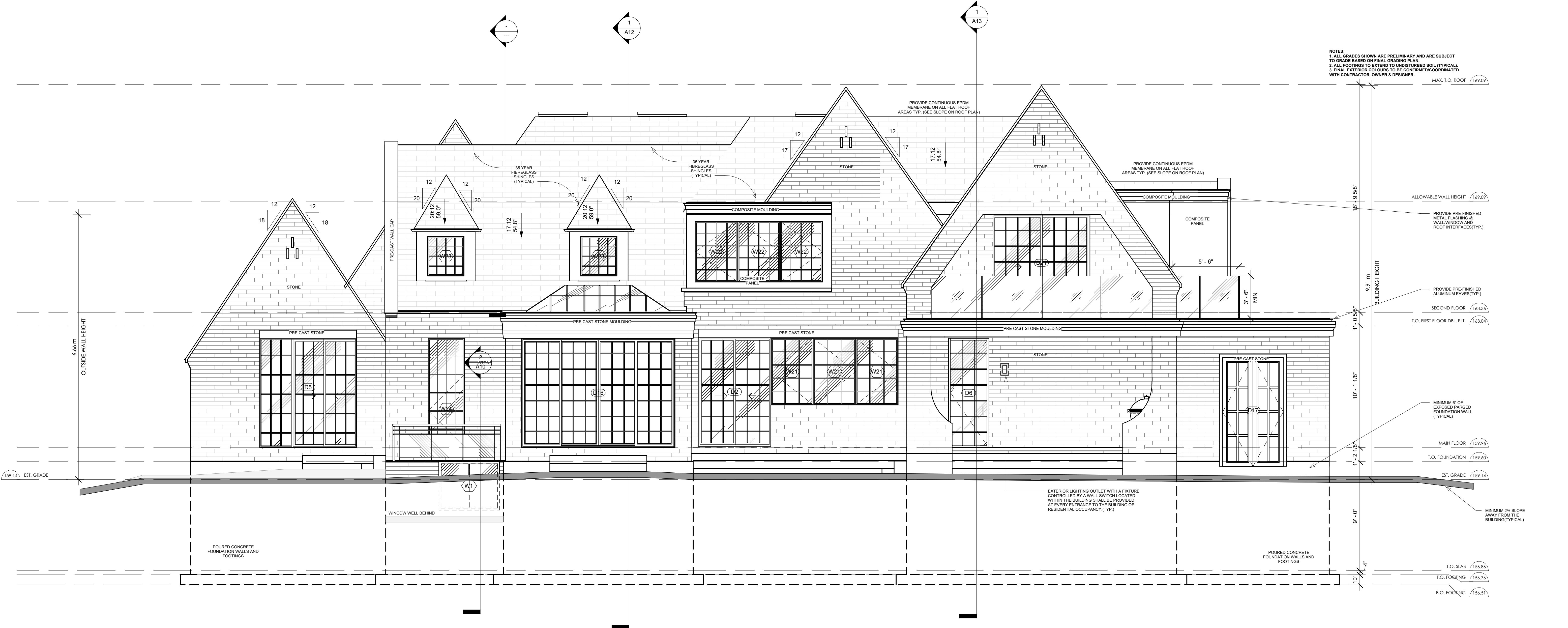
PROPOSED SINGLE FAMILY DWELLING UNIT

21 Ridgevale Dr, Markham, ON L6B 1A8

SHEET TITLE:

PROPOSED REAR ELEVATION

DRAWN BY: SVP SHEET No.
 CHECKED BY: JS
 DATE: 06-06-2025
 SCALE: AS SHOWN **A7**



PROPOSED REAR ELEVATION
 1/4" = 1'-0"

DOOR SCHEDULE				
DOOR TAG	WIDTH	HEIGHT	DESCRIPTION	Count
D1	3'-3"	8'-0"	SINGLE WOOD DOOR W/ WEATHER TIGHT SEAL	1
D2	6'-0"	9'-0"	2 PANEL SLIDING EXTERIOR DOOR W/ WEATHER TIGHT SEAL	1
D3	8'-4"	9'-0"	2 PANEL SLIDING EXTERIOR DOOR W/ WEATHER TIGHT SEAL	1
D4	10'-0"	9'-0"	3 PANEL SLIDING EXTERIOR DOOR W/ WEATHER TIGHT SEAL	1
D5	8'-0"	9'-0"	3 PANEL SLIDING EXTERIOR DOOR W/ WEATHER TIGHT SEAL	1
D6	3'-0"	8'-8"	SINGLE GLASS DOOR W/ WEATHER TIGHT SEAL	1
D7	3'-0"	8'-0"	SINGLE WOOD DOOR C/W SELF CLOSING MECH.	2
D8	8'-0"	8'-0"	4 PANEL WOOD SLIDING DOOR	1
D9	3'-0"	8'-0"	INTERIOR WOOD DOOR	15
D10	3'-0"	8'-0"	INTERIOR POCKET DOOR	2
D11	2'-8"	7'-0"	INTERIOR WOOD DOOR	1
D12	3'-0"	8'-0"	INTERIOR WOOD DOOR - ELEVATOR	3
D13	2'-8"	8'-0"	INTERIOR POCKET DOOR	3
D14	1'-8"	8'-0"	INTERIOR POCKET DOOR	2
D15	3'-0"	9'-0"	INTERIOR FRENCH GLASS DOOR - (SEE I. D.)	1
D16	12'-8"	9'-0"	4 PANEL GLASS SLIDING DOOR - SUNROOM	1
D17	5'-0"	9'-0"	EXTERIOR DOUBLE WOOD DOOR W/ WEATHER TIGHT SEAL	1
D18	3'-0"	8'-0"	EXTERIOR WOOD DOOR c/w WEATHER TIGHT SEAL	2
D19	5'-0"	8'-0"	INTERIOR DOUBLE WOOD DOOR	2
D21	8'-0"	8'-0"	2 PANEL SLIDING EXTERIOR DOOR W/ WEATHER TIGHT SEAL	1
D22	3'-0"	8'-0"	INTERIOR WOOD DOOR	1
D23	3'-0"	8'-0"	INTERIOR POCKET DOOR	2
D29	5'-0"	8'-0"	INTERIOR GLASS SLIDING DOOR IN GLASS SYSTEM	1
OH1	9'-0"	9'-0"	OVERHEAD GARAGE DOOR c/w WEATHER TIGHT SEAL & POWER DOOR OPENER	1
OH2	16'-0"	9'-0"	OVERHEAD GARAGE DOOR c/w WEATHER TIGHT SEAL & POWER DOOR OPENER	1

NOTE:
 1. ALL DOOR ARE PLACED MIN 6" FROM ADJACENT WALL OR CENTER OF THE WALL OR AS NOTED IN FLOOR PLAN (TYP.)
 2. ALL FLOOR TO CEILING DOOR OPENING TO BE SITE VERIFY BEFORE PRODUCTION.
 3. ANY MAJOR DISCREPANCIES SHOULD BE REPORTED TO SENSUS DESIGN STUDIO.
 4. USE DOOR AND WINDOW SCHEDULES IN REFERENCE TO FLOOR PLANS & ELEVATIONS.

WINDOW SCHEDULE						
WINDOW TAG	WINDOW SPEC		COMMENTS	SILL HEIGHT	HEAD HEIGHT	COUNT
	WIDTH	HEIGHT				
S1	4'-0"	4'-0"	SKYLIGHT WINDOW			3
W1	5'-0"	4'-0"	CAST IN PLACE SLIDING WINDOW	5'-0"	9'-0"	3
W2	3'-8"	4'-0"	CAST IN PLACE SLIDING WINDOW	5'-0"	9'-0"	3
W3	7'-0"	4'-0"	CAST IN PLACE SLIDING WINDOW	5'-0"	9'-0"	2
W4	2'-0"	6'-0"	FIXED SIDELITE WINDOW- MAIN DOOR	2'-0"	8'-0"	2
W5	7'-9"	4'-0"	FIXED WINDOW	0'-0"	4'-0"	1
W6	3'-6"	7'-0"	OPERABLE WINDOW	3'-0"	10'-0"	2
W7	5'-0"	7'-0"	OPERABLE WINDOW	0'-6"	7'-6"	1
W8	2'-6"	6'-0"	OPERABLE WINDOW	1'-0"	7'-0"	2
W9	2'-6"	5'-0"	FIXED TRANSOM WINDOW	8'-0"	13'-0"	2
W10	1'-8"	6'-0"	OPERABLE WINDOW	1'-0"	7'-0"	2
W11	1'-8"	2'-0"	FIXED TRANSOM WINDOW	7'-0"	9'-0"	2
W12	3'-4"	6'-0"	OPERABLE WINDOW	1'-0"	7'-0"	3
W13	3'-4"	2'-0"	FIXED TRANSOM WINDOW	7'-0"	9'-0"	3
W14	3'-6"	8'-0"	OPERABLE WINDOW	2'-0"	10'-0"	2
W15	3'-6"	6'-0"	OPERABLE WINDOW	0'-0"	6'-0"	2
W16	2'-6"	6'-0"	OPERABLE WINDOW	2'-0"	8'-0"	1
W17	3'-0"	5'-6"	OPERABLE WINDOW	1'-0"	6'-6"	2
W18	3'-0"	2'-6"	FIXED TRANSOM WINDOW	7'-0"	9'-6"	2
W19	3'-6"	4'-6"	OPERABLE WINDOW	2'-0"	6'-6"	2
W20	3'-0"	6'-0"	OPERABLE WINDOW	0'-0"	6'-0"	2
W21	3'-6"	5'-6"	OPERABLE WINDOW	3'-6"	9'-0"	3
W22	3'-6"	5'-0"	OPERABLE WINDOW	2'-6"	7'-6"	3
W23	3'-0"	3'-3"	FIXED WINDOW	3'-0"	6'-3"	2
W24	3'-0"	9'-0"	PARTIAL OPERABLE WINDOW	0'-0"	9'-0"	3
W25	4'-0"	9'-0"	FIXED WINDOW	0'-0"	9'-0"	4
W26	3'-4"	4'-6"	FIXED WINDOW	10'-0"	14'-6"	3
W27	3'-8"	10'-0"	FIXED WINDOW	0'-0"	10'-0"	3
W28	3'-8"	7'-0"	OPERABLE WINDOW	0'-0"	7'-0"	3
W29	2'-0"	8'-0"	FIXED SIDELITE WINDOW- WALKOUT DOOR	0'-0"	8'-0"	1
W30	2'-0"	5'-10"	OPERABLE WINDOW- INTERIOR KITCHEN	3'-2"	9'-0"	1

NO.	DESCRIPTION	DATE
1	ISSUED FOR SHOP DRAWINGS	07-10-2024
2	RE ISSUED FOR SHOP DRAWINGS	08-15-2024
3	RE ISSUED FOR SHOP DRAWINGS	08-28-2024
4	ISSUED FOR PERMIT	11-08-2024
5	RE ISSUED FOR PERMIT	04-05-2025
6	RE ISSUED FOR PERMIT	05-22-2025
7	RE ISSUED FOR PERMIT	06-06-2025
8	RE ISSUED FOR PERMIT	06-13-2025

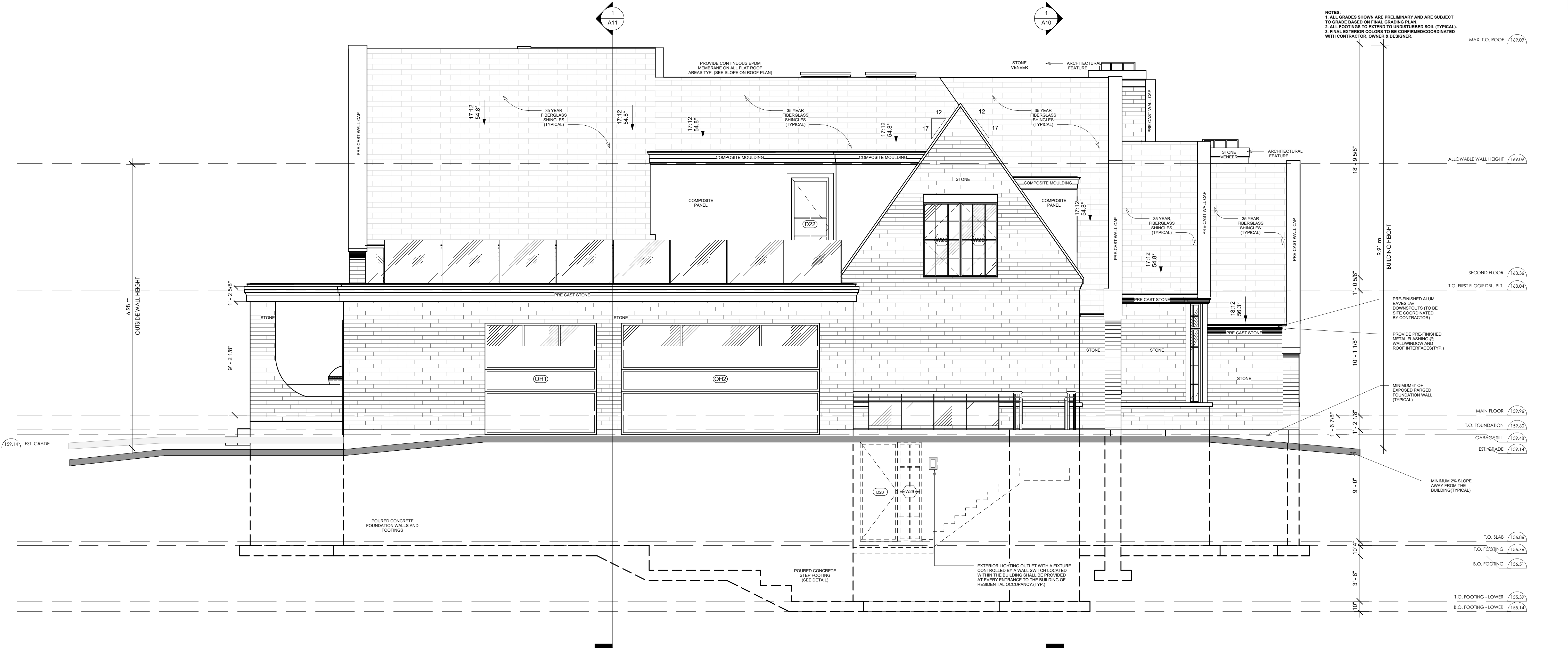
NOTES:
 DRAWINGS MUST NOT BE SCALED
 DRAWINGS TO BE READ IN CONJUNCTION WITH THE GENERAL NOTES AND THE O.B.C.
 ALL DRAWINGS & INFORMATION SHOWN ON THESE DRAWINGS MUST BE CHECKED & VERIFIED ON SITE PRIOR TO CONSTRUCTION OR FABRICATION OF ITS COMPONENTS. UNLESS NOTED OTHERWISE, NO PROVISION HAS BEEN MADE IN THE DESIGN FOR CONDITIONS OCCURRING DURING CONSTRUCTION.
 IT SHALL BE THE RESPONSIBILITY OF THE CONTRACTOR TO PROVIDE ALL NECESSARY BRACING, SHORING, SHEET PILING, OR OTHER TEMPORARY SUPPORTS, TO SAFEGUARD ALL EXISTING OR ADJACENT STRUCTURES AFFECTED BY CONSTRUCTION. ALL DIMENSIONS ARE GIVEN IN IMPERIAL UNITS UNLESS OTHERWISE INDICATED.
 ALL DRAWINGS ARE THE PROPERTY OF THE ARCHITECT / DESIGNER & MUST BE RETURNED UPON REQUEST.

SENSUS DESIGN STUDIO

DESIGN | INTERIORS | CONSTRUCTION

1315 LAWRENCE AVE EAST, TORONTO ON
 UNIT # S10
 PHONE: 416-919-1433
 EMAIL: jesse@sensusedesignbuild.ca
 www.sensusedesignbuild.ca

PROFESSIONAL STAMPS:



The undersigned has reviewed and takes responsibility for this design, and has the qualifications and meets the requirements set out in the Ontario Building Code to be a designer.
 Qualification Information
 Required unless design is exempt under Div. C-3.2.5 of the Building Code
 JESSE SAHLANI 44549
 NAME B.C.I.N.
 SENSUS DESIGN & BUILD INC. 123494
 FIRM B.C.I.N.

PROPOSED SINGLE FAMILY DWELLING UNIT

21 Ridgevale Dr, Markham, ON L6B 1A8

SHEET TITLE:

PROPOSED LEFT ELEVATION

DRAWN BY: SVP SHEET No.
 CHECKED BY: JS
 DATE: 06-06-2025
 SCALE: AS SHOWN A8

PROPOSED LEFT ELEVATION
 1/4" = 1'-0"

DOOR SCHEDULE				
DOOR TAG	WIDTH	HEIGHT	DESCRIPTION	Count
D1	3'-3"	8'-0"	SINGLE WOOD DOOR W/ WEATHER TIGHT SEAL	1
D2	6'-0"	9'-0"	2 PANEL SLIDING EXTERIOR DOOR W/ WEATHER TIGHT SEAL	1
D3	8'-4"	9'-0"	2 PANEL SLIDING EXTERIOR DOOR W/ WEATHER TIGHT SEAL	1
D4	10'-0"	9'-0"	3 PANEL SLIDING EXTERIOR DOOR W/ WEATHER TIGHT SEAL	1
D5	8'-0"	9'-0"	3 PANEL SLIDING EXTERIOR DOOR W/ WEATHER TIGHT SEAL	1
D6	3'-0"	8'-8"	SINGLE GLASS DOOR W/ WEATHER TIGHT SEAL	1
D7	3'-0"	8'-0"	SINGLE WOOD DOOR C/W SELF CLOSING MECH.	2
D8	8'-0"	8'-0"	4 PANEL WOOD SLIDING DOOR	1
D9	3'-0"	8'-0"	INTERIOR WOOD DOOR	15
D10	3'-0"	8'-0"	INTERIOR POCKET DOOR	2
D11	2'-8"	7'-0"	INTERIOR WOOD DOOR	1
D12	3'-0"	8'-0"	INTERIOR WOOD DOOR - ELEVATOR	3
D13	2'-8"	8'-0"	INTERIOR POCKET DOOR	3
D14	1'-8"	8'-0"	INTERIOR POCKET DOOR	2
D15	3'-0"	9'-0"	INTERIOR FRENCH GLASS DOOR - (SEE I. D.)	1
D16	12'-8"	9'-0"	4 PANEL GLASS SLIDING DOOR - SUNROOM	1
D17	5'-0"	9'-0"	EXTERIOR DOUBLE WOOD DOOR W/ WEATHER TIGHT SEAL	1
D18	3'-0"	8'-0"	EXTERIOR WOOD DOOR c/w WEATHER TIGHT SEAL	2
D19	5'-0"	8'-0"	INTERIOR DOUBLE WOOD DOOR	2
D21	8'-0"	8'-0"	2 PANEL SLIDING EXTERIOR DOOR W/ WEATHER TIGHT SEAL	1
D22	3'-0"	8'-0"	INTERIOR WOOD DOOR	1
D23	3'-0"	8'-0"	INTERIOR POCKET DOOR	2
D29	5'-0"	8'-0"	INTERIOR GLASS SLIDING DOOR IN GLASS SYSTEM	1
OH1	9'-0"	9'-0"	OVERHEAD GARAGE DOOR c/w WEATHER TIGHT SEAL & POWER DOOR OPENER	1
OH2	16'-0"	9'-0"	OVERHEAD GARAGE DOOR c/w WEATHER TIGHT SEAL & POWER DOOR OPENER	1

NOTE:
 1. ALL DOOR ARE PLACED MIN 6" FROM ADJACENT WALL OR CENTER OF THE WALL OR AS NOTED IN FLOOR PLAN (TYP.)
 2. ALL FLOOR TO CEILING DOOR OPENING TO BE SITE VERIFY BEFORE PRODUCTION.
 3. ANY MAJOR DISCREPANCIES SHOULD BE REPORTED TO SENSUS DESIGN STUDIO.
 4. USE DOOR AND WINDOW SCHEDULES IN REFERENCE TO FLOOR PLANS & ELEVATIONS.

WINDOW SCHEDULE						
WINDOW TAG	WINDOW SPEC		COMMENTS	SILL HEIGHT	HEAD HEIGHT	COUNT
	WIDTH	HEIGHT				
S1	4'-0"	4'-0"	SKYLIGHT WINDOW			3
W1	5'-0"	4'-0"	CAST IN PLACE SLIDING WINDOW	5'-0"	9'-0"	3
W2	3'-8"	4'-0"	CAST IN PLACE SLIDING WINDOW	5'-0"	9'-0"	3
W3	7'-0"	4'-0"	CAST IN PLACE SLIDING WINDOW	5'-0"	9'-0"	2
W4	2'-0"	6'-0"	FIXED SIDELITE WINDOW- MAIN DOOR	2'-0"	8'-0"	2
W5	7'-9"	4'-0"	FIXED WINDOW	0'-0"	4'-0"	1
W6	3'-6"	7'-0"	OPERABLE WINDOW	3'-0"	10'-0"	2
W7	5'-0"	7'-0"	OPERABLE WINDOW	0'-6"	7'-6"	1
W8	2'-6"	6'-0"	OPERABLE WINDOW	1'-0"	7'-0"	2
W9	5'-0"	5'-0"	FIXED TRANSOM WINDOW	8'-0"	13'-0"	2
W10	1'-8"	6'-0"	OPERABLE WINDOW	1'-0"	7'-0"	2
W11	2'-0"	2'-0"	FIXED TRANSOM WINDOW	7'-0"	9'-0"	2
W12	3'-4"	6'-0"	OPERABLE WINDOW	1'-0"	7'-0"	3
W13	2'-0"	3'-4"	FIXED TRANSOM WINDOW	7'-0"	9'-0"	3
W14	3'-6"	8'-0"	OPERABLE WINDOW	2'-0"	10'-0"	2
W15	3'-6"	6'-0"	OPERABLE WINDOW	0'-0"	6'-0"	2
W16	2'-6"	6'-0"	OPERABLE WINDOW	2'-0"	8'-0"	1
W17	3'-0"	5'-6"	OPERABLE WINDOW	1'-0"	6'-6"	2
W18	3'-0"	2'-6"	FIXED TRANSOM WINDOW	7'-0"	9'-6"	2
W19	3'-6"	4'-6"	OPERABLE WINDOW	2'-0"	6'-6"	2
W20	3'-0"	6'-0"	OPERABLE WINDOW	0'-0"	6'-0"	2
W21	3'-6"	5'-6"	OPERABLE WINDOW	3'-6"	9'-0"	3
W22	3'-6"	5'-0"	OPERABLE WINDOW	2'-6"	7'-6"	3
W23	3'-0"	3'-3"	FIXED WINDOW	3'-0"	6'-3"	2
W24	3'-0"	9'-0"	PARTIAL OPERABLE WINDOW	0'-0"	9'-0"	3
W25	4'-0"	9'-0"	FIXED WINDOW	0'-0"	9'-0"	4
W26	3'-4"	4'-6"	FIXED WINDOW	10'-0"	14'-6"	3
W27	3'-8"	10'-0"	FIXED WINDOW	0'-0"	10'-0"	3
W28	3'-8"	7'-0"	OPERABLE WINDOW	0'-0"	7'-0"	3
W29	2'-0"	8'-0"	FIXED SIDELITE WINDOW- WALKOUT DOOR	0'-0"	8'-0"	1
W30	2'-0"	5'-10"	OPERABLE WINDOW- INTERIOR KITCHEN	3'-2"	9'-0"	1

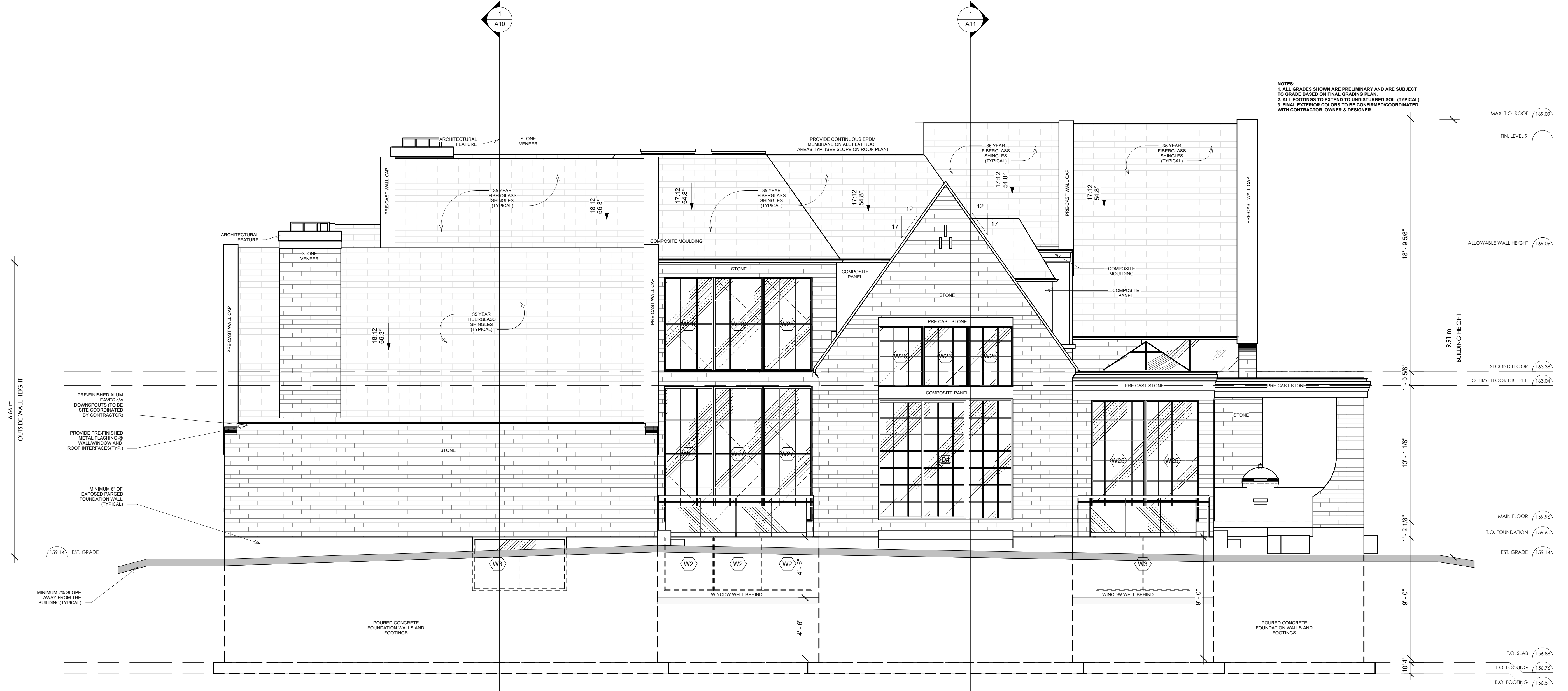
UNPROTECTED OPENINGS - RIGHT ELEVATION			
TOTAL WALL AREA	SF/SQ.M	964.54	89.61
GLAZING AREA	SF/SQ.M	314.73	29.24
DISTANCE		11.12m	
PROVIDED U.O.		32.63%	
PERMITTED U.O.		34% (For 100 Sq.m)	

NO.	DESCRIPTION	DATE
1	ISSUED FOR SHOP DRAWINGS	07-10-2024
2	RE ISSUED FOR SHOP DRAWINGS	08-15-2024
3	RE ISSUED FOR SHOP DRAWINGS	08-28-2024
4	ISSUED FOR PERMIT	11-08-2024
5	RE ISSUED FOR PERMIT	04-05-2025
6	RE ISSUED FOR PERMIT	05-22-2025
7	RE ISSUED FOR PERMIT	06-06-2025
8	RE ISSUED FOR PERMIT	06-13-2025

NOTES:
 DRAWINGS MUST NOT BE SCALED
 DRAWINGS TO BE READ IN CONJUNCTION WITH THE GENERAL NOTES AND THE O.B.C.
 ALL DRAWINGS & INFORMATION SHOWN ON THESE DRAWINGS MUST BE CHECKED & VERIFIED ON SITE PRIOR TO CONSTRUCTION OR FABRICATION OF ITS COMPONENTS. UNLESS NOTED OTHERWISE, NO PROVISION HAS BEEN MADE IN THE DESIGN FOR CONDITIONS OCCURRING DURING CONSTRUCTION.
 IT SHALL BE THE RESPONSIBILITY OF THE CONTRACTOR TO PROVIDE ALL NECESSARY BRACING, SHORING, SHEET PILING, OR OTHER TEMPORARY SUPPORTS, TO SAFEGUARD ALL EXISTING OR ADJACENT STRUCTURES AFFECTED BY CONSTRUCTION. ALL DIMENSIONS ARE GIVEN IN IMPERIAL UNITS UNLESS OTHERWISE INDICATED.
 ALL DRAWINGS ARE THE PROPERTY OF THE ARCHITECT / DESIGNER & MUST BE RETURNED UPON REQUEST.

SENSUS
 DESIGN STUDIO
 DESIGN | INTERIORS | CONSTRUCTION
 1315 LAWRENCE AVE EAST, TORONTO ON
 UNIT # S10
 PHONE: 416-919-1433
 EMAIL: jesse@sensusedesignbuild.ca
 www.sensusedesignbuild.ca

PROFESSIONAL STAMPS:



NOTES:
 1. ALL GRADES SHOWN ARE PRELIMINARY AND ARE SUBJECT TO GRADE BASED ON FINAL GRADING PLAN.
 2. ALL FOOTINGS TO EXTEND TO UNDISTURBED SOIL (TYPICAL)
 3. FINAL EXTERIOR COLORS TO BE CONFIRMED/COORDINATED WITH CONTRACTOR, OWNER & DESIGNER.

PROPOSED RIGHT ELEVATION
 1/4" = 1'-0"

PROPOSED SINGLE FAMILY DWELLING UNIT

21 Ridgevale Dr, Markham, ON L6B 1A8

SHEET TITLE:

PROPOSED RIGHT ELEVATION

DRAWN BY: SVP
 CHECKED BY: JS
 DATE: 06-06-2025
 SCALE: AS SHOWN
 SHEET No.
A9